

## GEN-PAC SKID & CONTAINER GENESYS BOOSTER



The AMERIFLO GENESYS Booster Packaged Systems (GEN-PAC) feature state of the art engineering design. All GEN-PAC booster systems are designed using 3D modeling software. Units can be supplied with an electric motor and/or a diesel engine based on job-site requirements. Units can also be supplied in a containerized version for very easy site installation. Options for hose manifolds, waste cones, flowmeter and city bypass loops are only a few of the options available on GEN-PAC systems. Four different pump types allow for maximum hydraulic and dimensional job-site flexibility.

All product is designed using 3D modeling to make the most efficient use of space at the job-site. These products are fully compliant with NFPA 20 and are available in a variety of materials for sea water applications including Nickel Aluminum bronzes and 2205 duplex stainless steels. Simply connect the piping & power and the system is ready to go!!

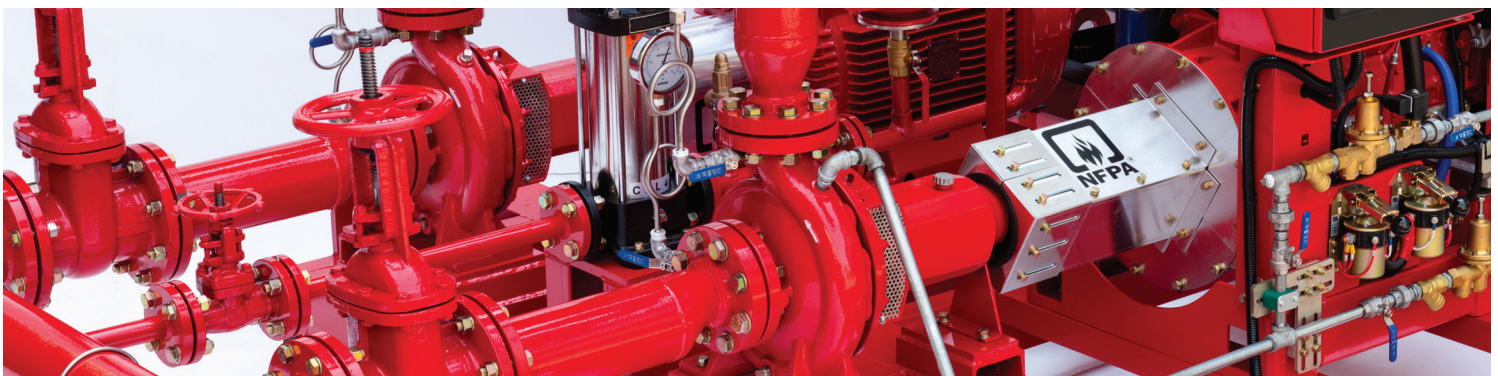


### TYPICAL INSTALLATIONS:

- Residential buildings
- Commercial
- Hospitals
- Hotels
- Oil & gas
- Airports
- Power stations
- Sea water

### CONFIGURATION:

- 1 Electric Motor
- 1 Diesel Engine
- 1 Electric + 1 Diesel Engine
- 2 Electric
- 2 Diesel
- Skid Package or Container



Hose manifold options allow for the mounting of hose valves, caps and chains

Single and double wall fuel tank options cover fuel capacity through 1100 gallons

Pump types include End Suction (ES), Vertical Inline (EV), Split Case (SC) and Vertical Turbine (VT) that can be electrically or diesel engine driven

Batteries mounted and pre-wired on diesel package

Jockey pump pressure loop integrated into the system piping and can be supplied in a vertical multistage (VM) or submersible turbine (ST) pump type

GEN-PAC modular construction allows for a system to be shipped in modules greatly simplifying shipping costs and allows for easy installation at tight job sites

All fire pump and jockey pump controllers are pre-mounted with 304 SS sensing lines pre-plumbed

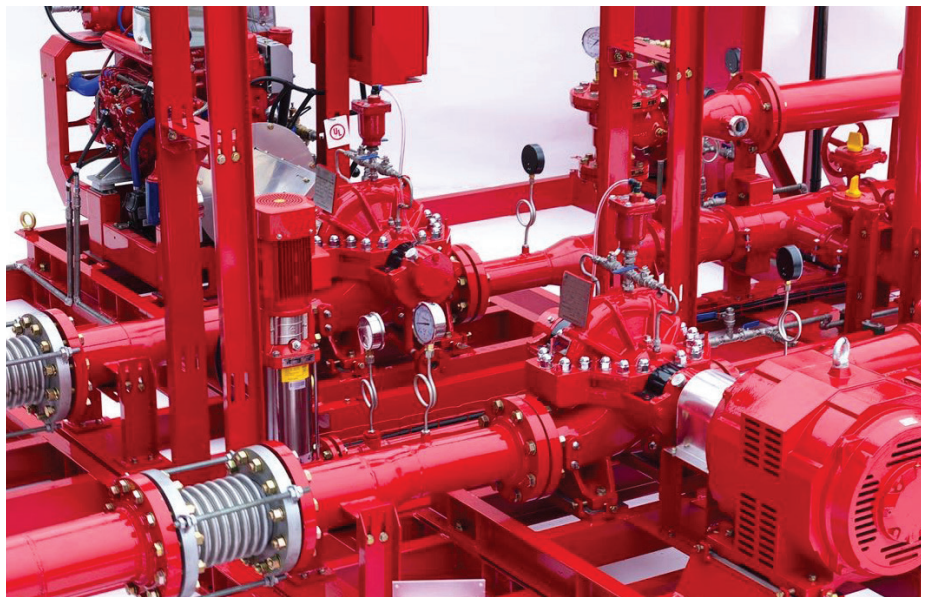
GEN-PAC SKID systems can be supplied with sound attenuation enclosures upon request

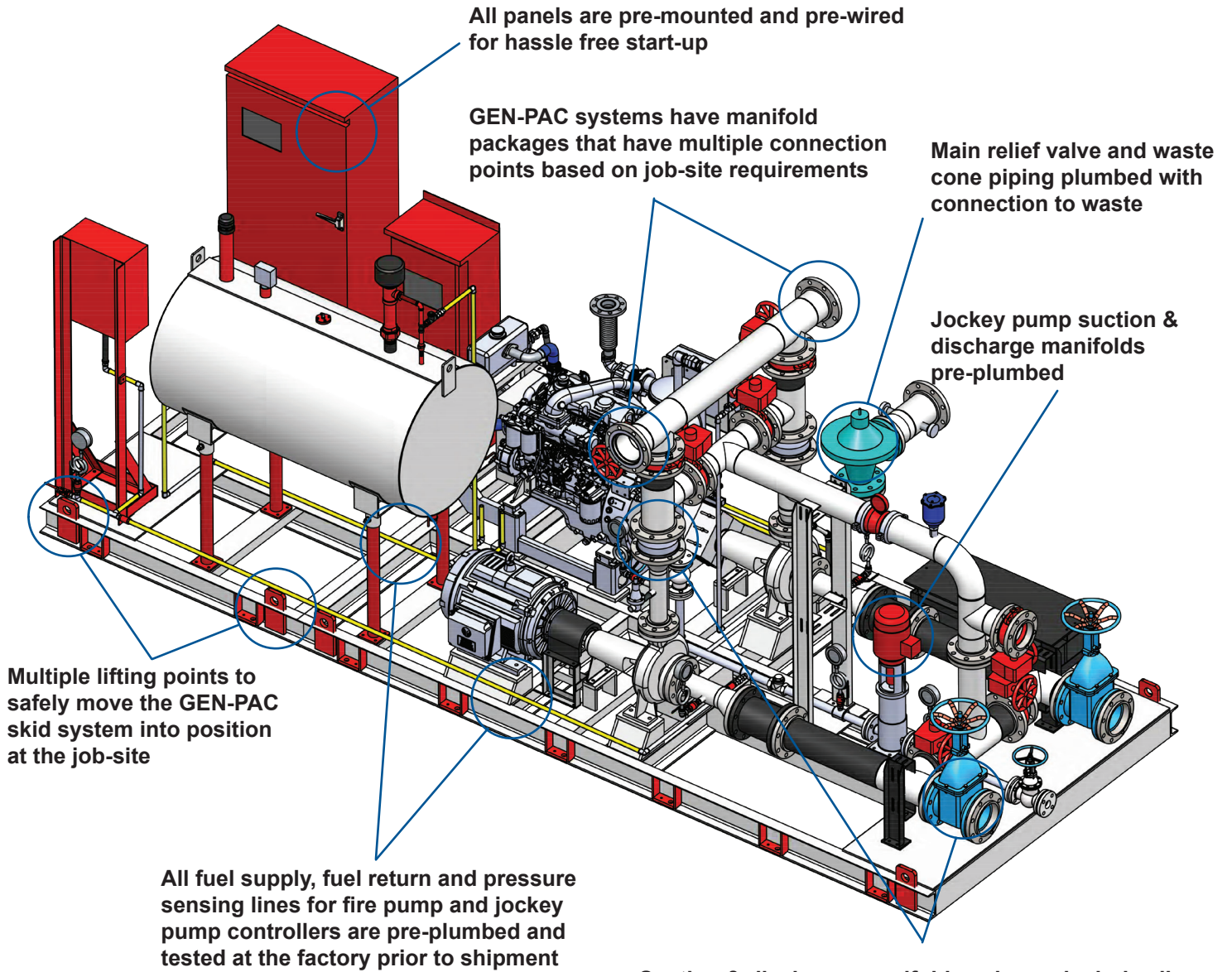
GEN-PAC system options include waste cone with piping, flowmeter and city by-pass loops



### DISCHARGE & PERFORMANCE

- Flows from 50 GPM to 8,000 GPM
- Heads from 40 PSI to 485 PSI
- Discharge sizes from 2" to 16"
- Pump types include AMERIFLO End Suction (ES), Vertical Inline (EV), splitcase (SC) and vertical turbine (VT) in simplex or duplex orientations

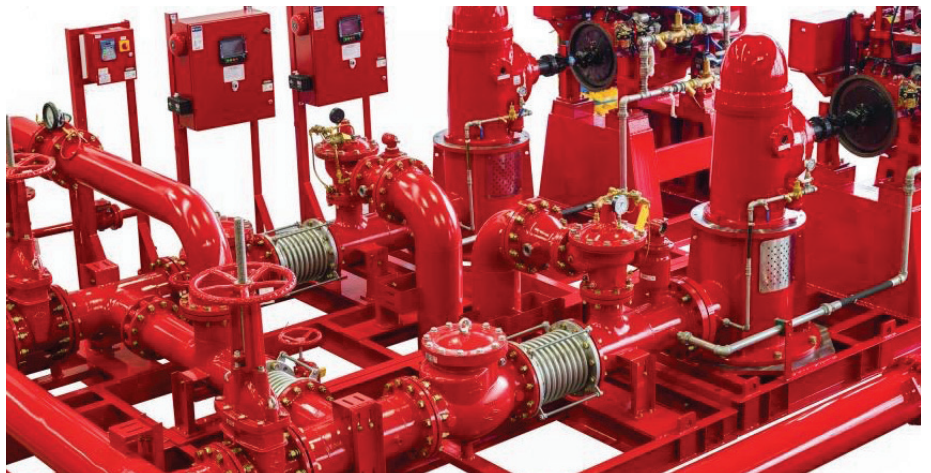


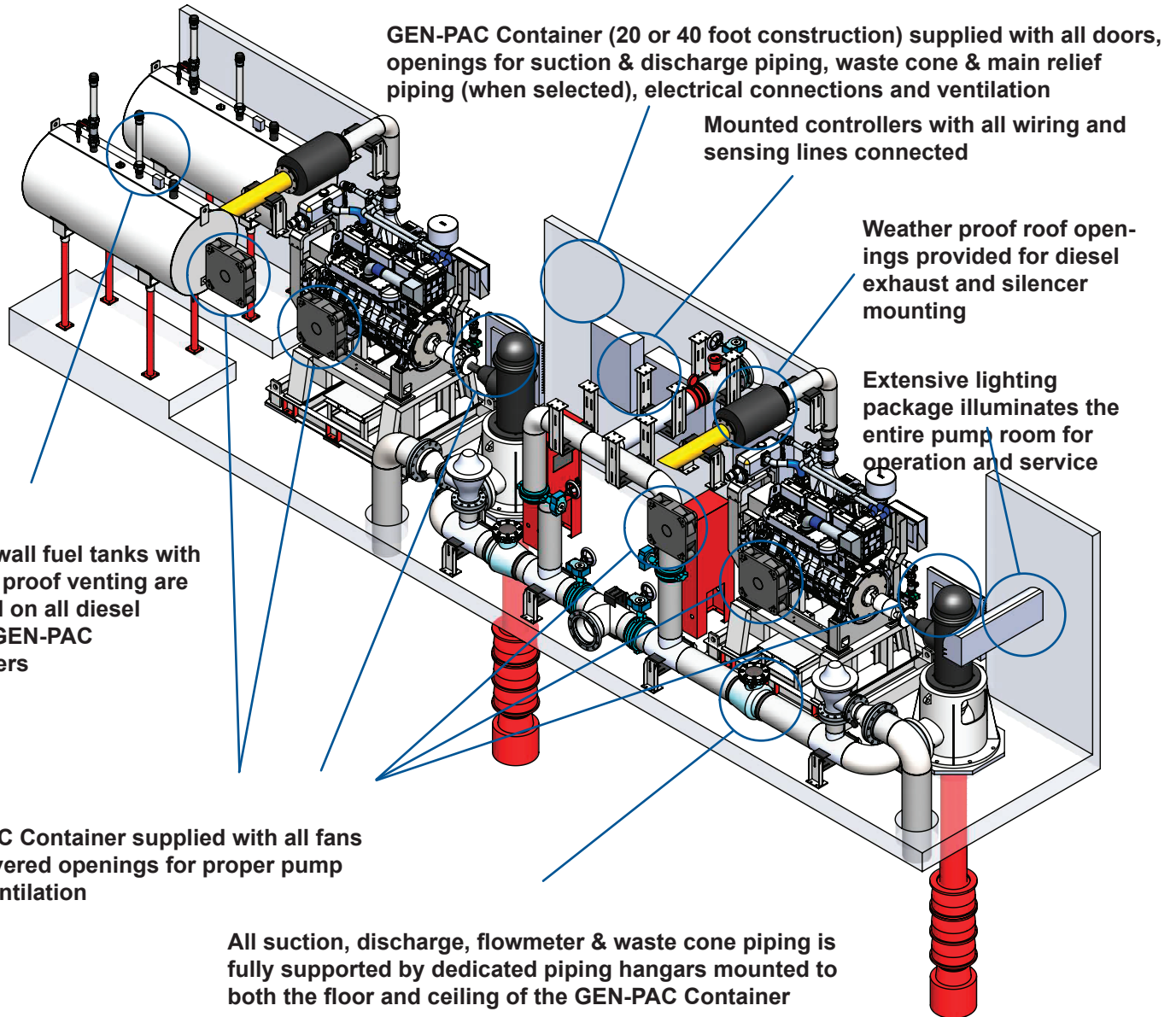


Suction & discharge manifold packages include all isolation and check valves per NFPA 20

### DISCHARGE & PERFORMANCE

- Flows from 50 GPM to 8,000 GPM
- Heads from 40 PSI to 485 PSI
- Discharge sizes from 2" to 16"
- Pump types include AMERIFLO End Suction (ES), Vertical Inline (EV), splitcase (SC) and vertical turbine (VT) in simplex or duplex orientations





### DISCHARGE & PERFORMANCE

- Fully enclosed pump room (20 or 40 foot container)
- Flows from 50 GPM to 8,000 GPM
- Heads from 40 PSI to 485 PSI
- Discharge sizes from 2" to 16"
- Pump types include AMERIFLO End Suction (ES), Vertical Inline (EV), splitcase (SC) and vertical turbine (VT) in simplex or duplex orientations

