

The AMERIFLO series diesel engine product line has one the most diverse, third party certified horsepower ranges offered in the fire protection industry. With third party certified horsepower from 51 HP through an incredible 1,207 HP, you will not find a more complete offering anywhere in the world. AMERIFLO is the only North American pump manufacturer who also manufactures in house diesel engines. This gives AMERIFLO an incredible amount of control over manufacturing, quality and competitive pricing.

AMERIFLO series engines can be used to drive end suction, split case and/or vertical turbine stationary fire pump systems.

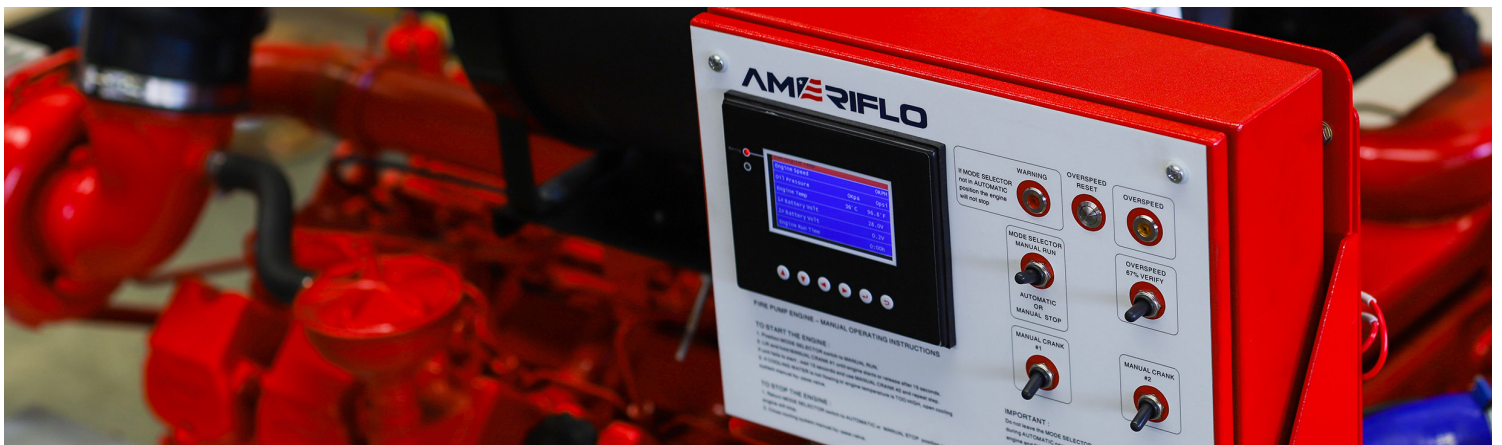


TYPICAL INSTALLATIONS:

- Residential buildings
- Commercial
- Hospitals
- Hotels
- Oil & gas
- Airports
- Power stations
- Sea water

DRIVEN PRODUCTS:

- End Suction
- Split Case (Single & two stage)
- Vertical Turbine



SERIES 9050

MODEL AF

DIESEL ENGINES

Range: 51 HP to 1207 HP

Services: Fire Protection

DIVERSE DIESEL ENGINE PROGRAM

- Ameriflo is the ONLY North American fire pump manufacturer to offer the most hydraulically complete fire protection pump offering coupled with a complete line of Diesel engines
- Due to Ameriflo's significant pump design experience, Ameriflo is the only Diesel engine manufacturer with in house pump design experience to ensure that the Diesel engine packages seamlessly integrate with the pump package
- Other Diesel engine manufacturers rely on outside pump experience, where as, this diverse experience is integral and in house to the Ameriflo Diesel engine program ensuring that not only is the Diesel engine package designed correctly but that the pump design needs do not go ignored
- Ameriflo is the only North American Fire Protection manufacturer to offer single source responsibility on both the fire pump and the Diesel engine as they are the only Fire Protection manufacturer to manufacture both the pump AND the Diesel engine
- One of the largest third party certified horsepower ranges with diesel engines from 51 HP to an incredible 1207 HP
- Ameriflo has the LARGEST 3000 RPM Diesel engine offering in the industry with models producing 335 HP, significantly higher than any other competitor
- These engines can be used to drive the Ameriflo ES End Suction, SC Split Case and/or the VT Vertical Turbine product lines

PROPRIETARY ENGINE CRADLE

- Proprietary & industry first Diesel engine Vibration Isolation Cradle (VIC) that isolates virtually all engine vibration from the pump, system and base assembly
- The competition has no vibration isolation available on any base to reduce this vibration, and as such, all vibration on their package is transmitted directly to the pump, system piping and foundation drastically reducing overall pump life
- Each Diesel engine cradle has flexible engine mounts that provide superior support for the complete assembly similar to ones used in the automotive industry
- Unique design allows all support systems to be mounted in a modular format keeping the overall assembly much cleaner
- Subsystems that are mounted to the Diesel engine cradle include the cooling loop, battery contactors, engine pre-heater, heat exchanger assembly and AMERITOUCH Diesel engine controller

AMERITOUCH UL DIGITAL CONTROLLER

- The AMERITOUCH UL Listed Diesel engine controller is a fully digital controller featuring a touch screen interface
- All Diesel engine operation as well as all Diesel engine systems are monitored from a central point
- Overspeed indication with overspeed reset annunciators
- Options also included manual cranking of #1 or #2 battery banks
- Monitors all engine parameters and will indicate a warning for a variety of parameters including low raw water flowrate, low raw water system pressure, Diesel engine overspeed, high Diesel engine temperature and low Diesel engine oil pressure
- Very clean and high visibility design
- The competition DOES NOT include a digital controller on all Diesel engine packages but only offers this on a select few with analog gauges standard that are more prone to failure



AMERIFLO
125 Morrison Road, Rossville, TN 38066
www.ameriflo-usa.com

CAST HEAT EXCHANGER

- All Ameriflo Diesel engines feature a highly reliable, fully cast iron heat exchanger cooling system
- Constructed out of a fully CAST IRON housing as compared to a light duty, welded and fabricated version used by the competition
- Lighter duty welded and fabricated heat exchangers are more susceptible to welding fatigue failure due to Diesel engine vibration which is not an issue with a fully cast heat exchanger
- Light duty, welded and fabricated heat exchangers are SIGNIFICANTLY less efficient at thermal heat transfer and more susceptible to failure through weld paths that are simply not present on a fully cast assembly
- Fully cast heat exchangers are thermally more efficient than welded and fabricated assemblies keeping the engine at a safer temperature for proper operation and proper temperatures
- The external raw water is isolated from the closed, internal cooling loop
- Very reliable and easy to service with a flange to easily remove the tube assembly from the housing for service and cleaning
- All cooling lines are easily accessible and easy to replace

COOLING LOOP

- Cooling loops feature normal and emergency operating modes
- Very clean design WITHOUT paint as compared to the competition making for a much more professional presentation
- All cooling loops have wye strainers to make sure the diesel engine is supplied with the cleanest raw water possible
- A highly visible pressure gauge is mounted on the loop for continuous monitoring of raw water pressure
- The AMERITOUCH digital Diesel engine controller monitors raw water flowrate and raw water system pressure by the use of digital measuring equipment
- All FM Ameriflo Diesel engines feature a digital flow monitoring system (with visual display) integrated into the cooling loop that is not available from the competition

PRE-HEATER

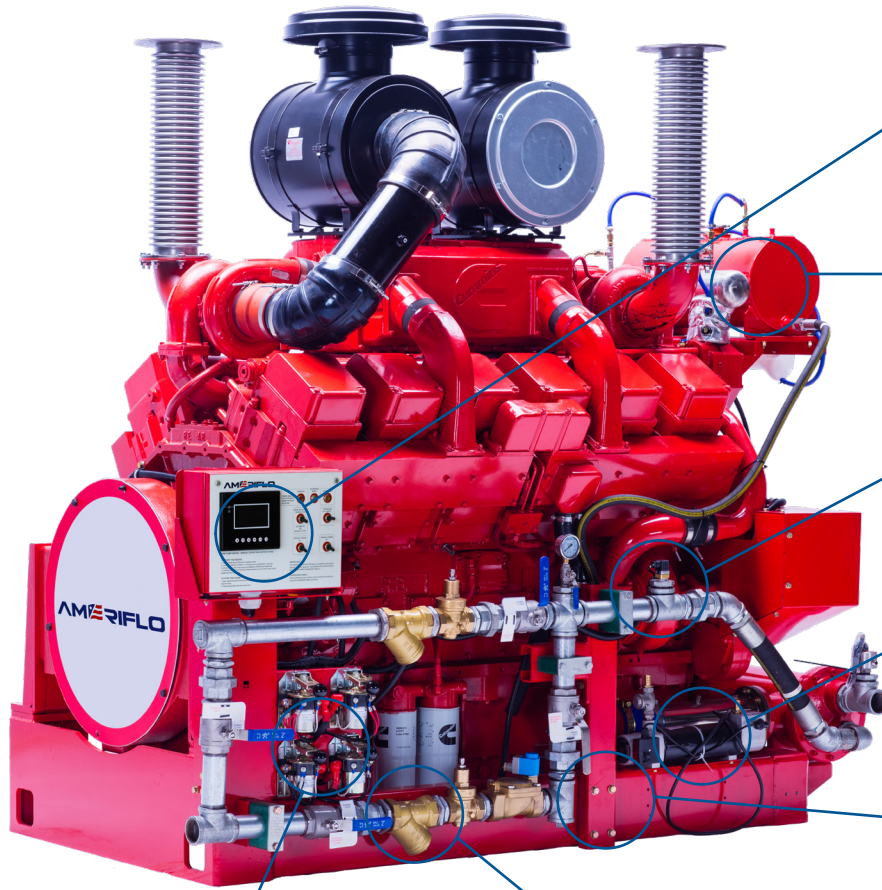
- All Ameriflo Diesel engines feature an on board pre-heater to make sure the diesel engine temperature always stays in the optimum operating range
- Ensures that the Diesel engine is ready to start at any time and can be supplied in 115 or 220 volt systems
- The pre-heater heats the Diesel engine fluid as compared to the competition which only warms the Diesel engine block
- The Ameriflo pre-heater assembly constantly heats the Diesel engine fluid to ensure that the block AND fluid are kept at a constant temperature for consistent emergency starting

BATTERY CONTACTORS

- All Ameriflo Diesel engines operate on higher voltage 24 volt systems allowing for more reliable starting in diverse environmental conditions
- The competition only uses 24 volt systems as an option on smaller Diesel engines significantly reducing the energy available for quick and reliable starting each and every time
- Dual, third party certified battery contactors for emergency starting



AF SERIES DIESEL ENGINES
©2021 AMERIFLO



The AMERITOUCH full color, digital, programmable logic controller (PLC) features a state of the art touchscreen that allows for very easy operation of any AMERIFLO diesel engine

AF series engines feature heat exchanger cooling fully integrated into the skid assembly

Onboard engine systems monitor raw water pressure, raw water temperature and a variety of other parameters and communicate directly with the AMERITOUCH digital controller

All engines have integrated engine pre-heater to ensure the block temperature is maintained

AF series engines are available in a 4, 6, 8, 10 & 12 cylinder version with industry first vibration isolation engine cradle significantly reducing engine vibration

All AMERIFLO diesel engines feature 24 volt starting systems and have dual UL certified battery contactors

AF series raw water cooling loops are supplied in a variety of sizes and have integrated pressure reducing valves, strainers, standard & emergency by-loops and can be supplied in all stainless steel material for sea water applications

