

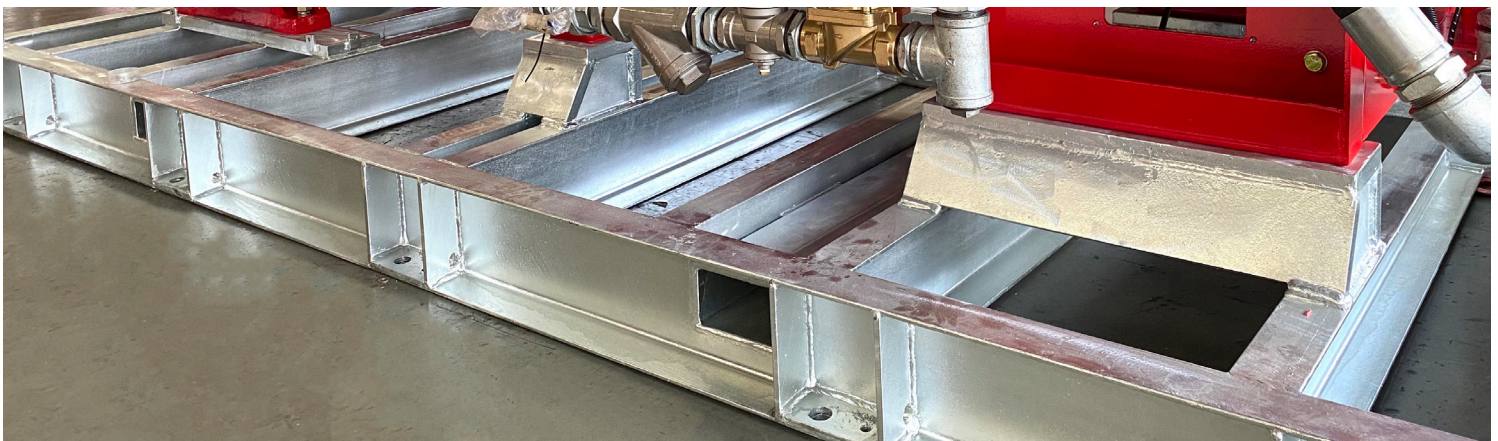


The AMERIFLO fabricated base assemblies are the best in the industry. These bases are highly engineered and have features and benefits simply not available from the competition. These bases are constructed out of high tensile carbon steel, have milled pads under the driver and the pump, integral alignment jackscrews to aid in field alignment, base leveling jackscrews to help level the base to the pump pad and dual integral grounding lugs for safety. These heavy duty bases are welded with vertical gussets that maximize torsional rigidity and make sure that the products being supported stay in place.

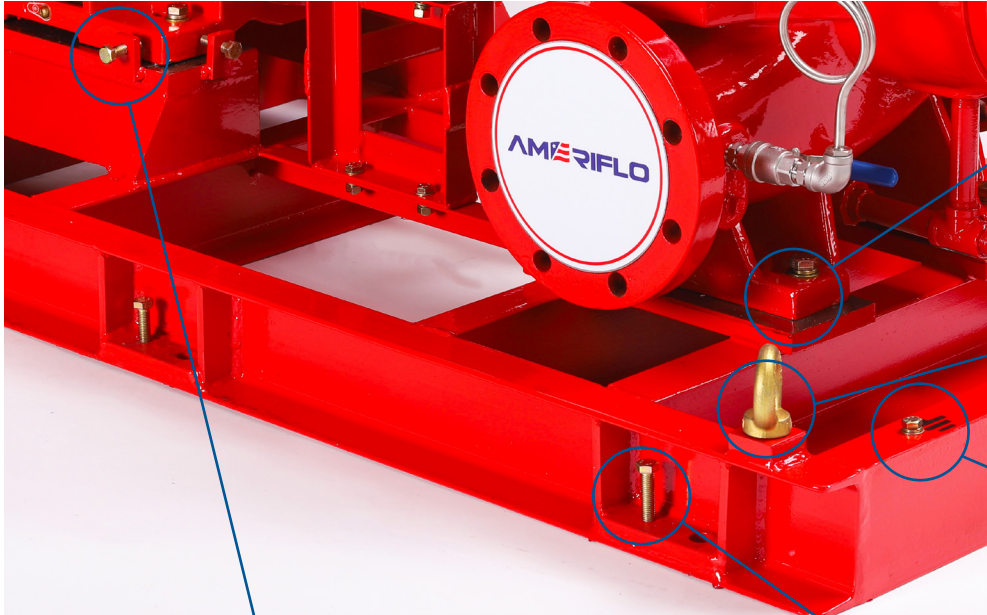
The fabricated bases used on the Ameriflo 5040 Vertical Turbine product line feature an integral Diesel engine riser as part of the standard base. This greatly simplifies field installation and allows for the base assembly to be installed on a flat concrete pad.

STANDARD FEATURES:

- Welded I-Beam Construction
- Integral & Removable Lifting Lugs
- Grounding Lugs
- Milled Pads
- Alignment Jackscrews
- Base Leveling Jackscrews
- Integral Diesel Engine Risers on Vertical Turbine Installations
- Optional Galvanized Construction



FABRICATED BASE ASSEMBLIES



Milled pump & driver pads to ensure no soft foot present during installation

Integral lifting lugs to properly lift and support the base assembly during shipment and installation

Dual grounding lugs on both short ends of the base for easy connection

Base leveling jackscrews to aid in the leveling process between the pump base and the concrete pad

Alignment jackscrews on the driver (when electrically driven) or under the pump (when Diesel engine driven) to aid in field alignment

Integral Diesel engine fabricated riser used on Vertical Turbine installations removes the need to create a riser on the concrete pad

