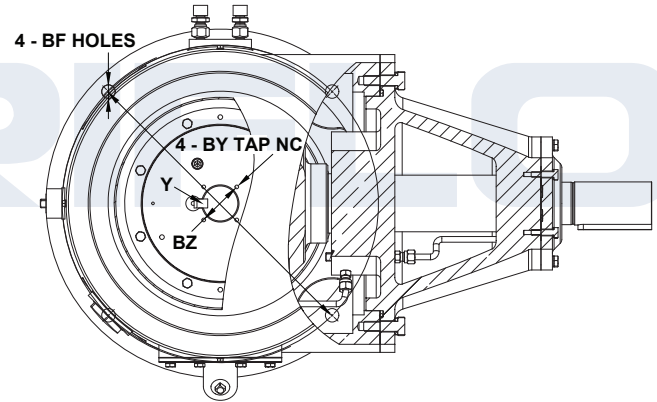
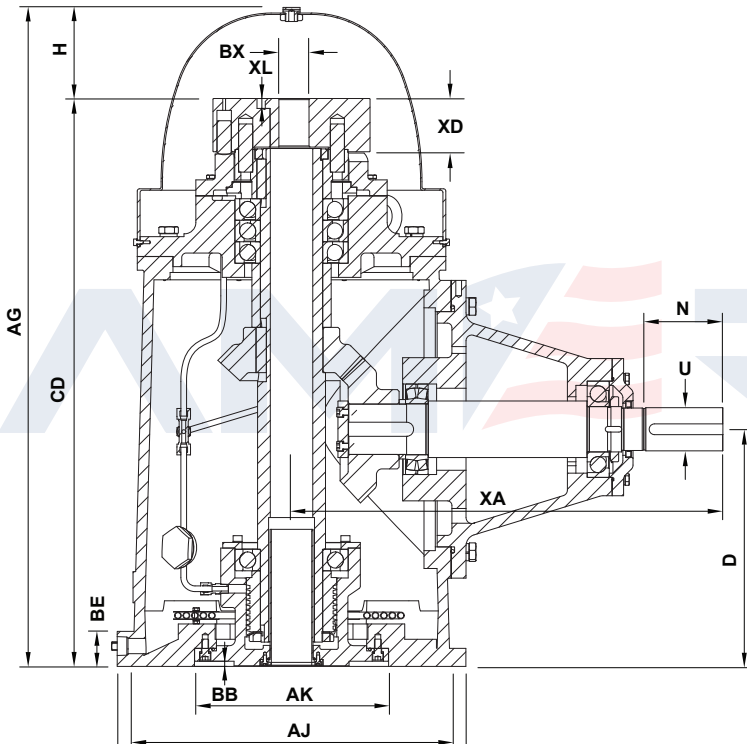




MODEL	HP	VERTICAL SHAFT SPEED [RPM]	HORIZONTAL SHAFT SPEED [RPM] SPEED DECREASING RATIOS DRIVER : DRIVEN								MAXIMUM DOWN-THRUST LBF [N]
			11 : 10	6 : 5	5 : 4	4 : 3	3 : 2	5 : 3	7 : 4	2 : 1	
G100	100	1760	880	1005	1173	1320	1408	1466	1600	1760	6,744 [30,000]
G150	150										8,475 [37,700]
G250	250										10,341 [46,000]
G350	350										14,208 [63,200]
G500	500										16,658 [74,100]

MODEL	HP	VERTICAL SHAFT SPEED [RPM]	HORIZONTAL SHAFT SPEED [RPM] SPEED DECREASING RATIOS DRIVER : DRIVEN									MAXIMUM DOWN-THRUST LBF [N]
			11 : 10	6 : 5	5 : 4	4 : 3	3 : 2	5 : 3	7 : 4	2 : 1	9 : 4	
G100	100	1760	1936	2112	2200	2346	2640	2933	3080	3520	3960	6,744 [30,000]
G150	150											8,475 [37,700]
G250	250											10,341 [46,000]
G350	350											14,208 [63,200]
G500	500											16,658 [74,100]



9060 FM APPROVED RIGHT ANGLE GEAR DRIVES

MODEL	CD	D	U	XA	N	AG	H	BE	BD	AJ	AK	BB	BF	KEYSEAT - X	BX		XD
															MIN	MAX	
G100	20.250	9.000	1.875	16.500	3.500	24.375	4.000	0.750	16.500	14.750	13.500	0.188	0.688	0.500x0.250x2.750	1.188	1.500	1.750
G150	25.000	11.375	2.000	17.500	3.500	29.500	4.000	1.000	16.500	14.750	13.500	0.188	0.688	0.500x0.250x2.750	1.188	1.500	1.750
G250	30.000	13.250	2.438	20.500	4.750	34.500	4.000	1.000	20.000	14.750	13.500	0.188	0.688	0.625x0.313x3.750	1.188	1.938	2.375
G350	34.250	15.000	2.750	24.000	5.250	40.000	5.250	1.125	20.000	14.750	13.500	0.188	0.688	0.625x0.313x3.750	1.438	2.000	2.625
G500	39.500	16.250	3.000	30.000	5.750	46.000	6.250	1.250	24.500	22.000	13.500	0.375	0.938	0.750x0.375x4.750	1.500	2.438	3.375

BX	Y	BY	XL	BZ
1.188	0.250x0.125	1/4-20	0.563	1.750
1.250	0.250x0.125	1/4-20	0.563	1.750
1.438	0.375x0.188	1/4-20	0.563	2.125
1.500	0.375x0.188	1/4-20	0.563	2.125
1.688	0.375x0.188	1/4-20	0.563	2.500
1.938	0.375x0.188	1/4-20	0.563	2.500
2.000	0.375x0.188	1/4-20	0.563	2.500
2.100	0.500x0.250	3/8-16	0.688	3.250
2.438	0.625x0.313	3/8-16	0.688	3.250
2.688	0.625x0.313	3/8-16	0.688	3.250
2.938	0.750x0.375	3/8-16	0.938	4.250

